



Product Information

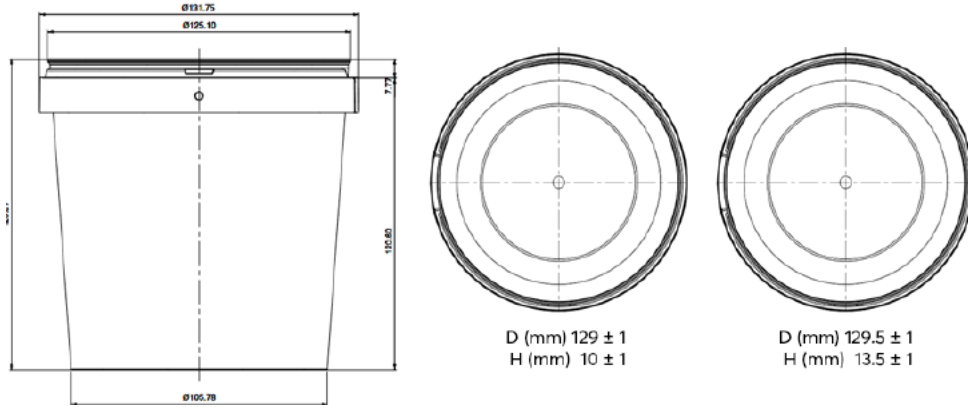
Product Type	Tamper-Evident
Shape	Round
Volume	1000ml
Container Diameter	125.10mm
Container Height	128mm
Container Weight	41.5g
Lid Weight	10.5g
Handle Weight	1.6g
Colour	Clear
Food Approval	Yes
Closure Type	Tamper-Evident Tab
Protective Collar	Yes
IML Available?	Containers and Lids



Technical Specification

Materials	PP random QU 80 A (MFI 35), Braskem (MFI 40), Borealis RJ377MO Random, Moplen RP348T, Borealis BD950MO Freezgrade (Transparent).
Approval	All raw materials and masterbatches used in the production process have the appropriate food contact. Containers and lids are produced by Polypropylene in grades approved for food packaging in accordance with European Regulation 10/2011, 1935/2004, 2023/2006 (and their modifications). Overall and specific migration controls are carried out in accordance with European Regulation 10/2011.
Colours	The products are mainly available in white, in various other colors after order. approvals.
Hot Fill	85–95° C The material chosen has a very good heat resistance and the packaging is suitable for hot filling. Notably, plastic packaging become flexible when subjected to hot filling temperatures and care must be taken in relation to stacking immediately after hot filling. After cooling of the product and pail, the pail regains its original stacking strength. Microwave Safe
Cold Temperatures	The standard resin material for white/coloured products resists temperatures down to -20° C. Deep freezing below - 20° C may require a special resin available on request. Standard transparent (CLX) products might become brittle at temperatures below 0° C, and special resins are available on request for applications below freezing. Resins tailored for freezing stability has a lower stackability than standard resin which must be taken into consideration.
Storage	The compliance of the product to the technical specifications in this data sheet is guaranteed for 12 months after the date of the delivery subject to suitable storage.

Technical Drawings



Palletisation

Item	Pieces per Box	Pieces per Pallet	Boxes per Pallet	Box Size (CM)	Total Pallet Height (CM)
Containers and Lids	240	4800	20	H 40 x W 40 x L 60	215
Containers	225	4950	22	58 x 38 x 39	215
Lids	1125	24750	20	Same as Above	215